

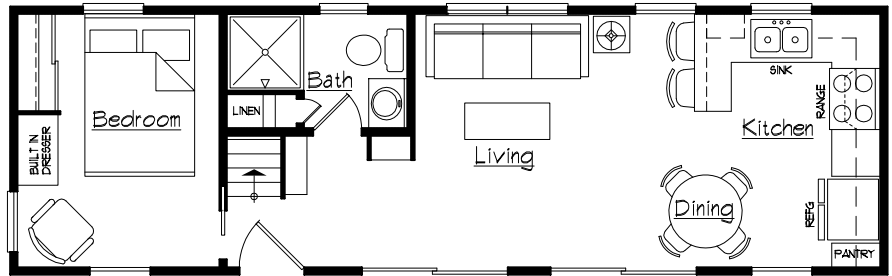
CONCEPT TO REALITY

**** BUILT 2007 ****

*** Pelican Lake Wisconsin ***

Hoilday Loft CL - 11'-0" x 36'-0" (Custom)

This very spacious loft model sits prominently on the shores of beautiful Pelican Lake. The double patio doors take full advantage of the southern exposure. A 24' Sunsetter awning keeps the summer heat at bay and yet allows the cool lake breeze to drift through the numerous windows. An end kitchen designed by the owners incorporates a snack bar, full size appliances and a granite sink.



Floor Plan - Pelican Lake Wisconsin

North Park Homes & Cabins 2007

North Park Homes & Cabins

10355 Highway 70 West Minocqua, WI. 54548
Phone: 715-356-3353 Fax: 715-356-3637
Web: www.northparkhomesandcabins.com
E-mail: northparkhomes@gmail.com



*inquire additional information
reference Pelican Lake WI
January 2010*