

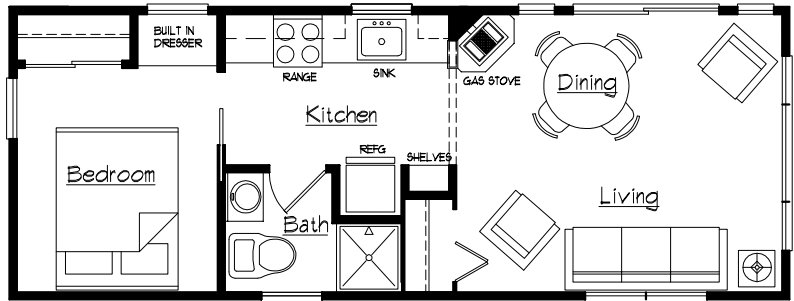
# CONCEPT TO REALITY

## \*\* BUILT 2009 \*\*

### \*Ironwood Michigan\*

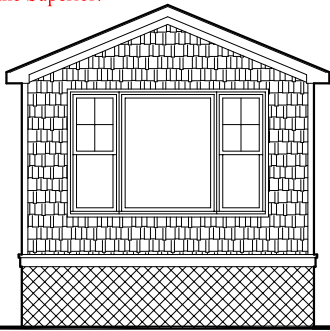
Shoreline - 12'-0" x 32'-0" (Custom)

What started out as a little trailer turned into one of our nicest builds to date. A gas stove with a stone hearth and river stone wall accents, provides the heat and a "cabin-like" feel to this home. The granite countertops with an under mount sink are something to envy! There is also a raised counter next to the gas stove...a place to allow their homemade pies to gradually cool off and yes they are very good! An exciting build that is completely "off-grid" utilizing solar panels and a composting toilet. The numerous details and wrap-around deck take full advantage of the sunsets across Lake Superior!



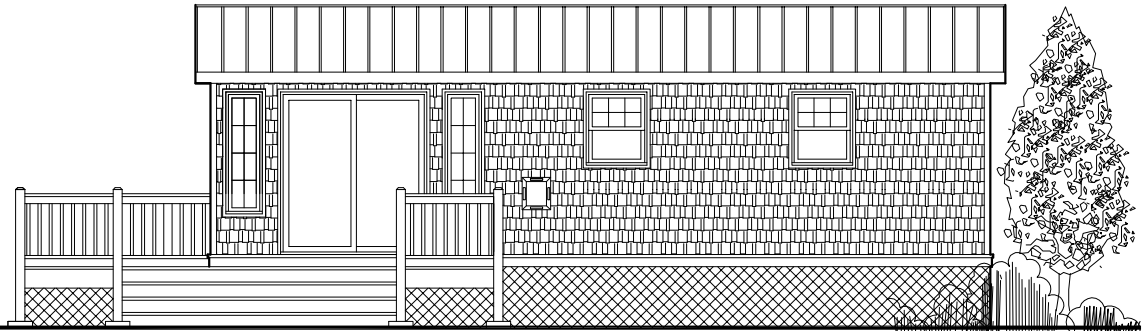
Floor Plan - Ironwood Michigan

*North Park Homes & Cabins 2009*



Elevation

*North Park Homes & Cabins 2009*



Elevation

*North Park Homes & Cabins 2009*

**North Park Homes & Cabins**  
 10355 Highway 70 West Minocqua, WI. 54548  
 Phone: 715-356-3353 Fax: 715-356-3637  
 Web: [www.northparkhomesandcabins.com](http://www.northparkhomesandcabins.com)  
 E-mail: [northparkhomes@gmail.com](mailto:northparkhomes@gmail.com)



*inquire additional information  
 reference Ironwood Michigan  
 January 2010*